

World Cafe: The Jewish Community Center and Community Resilience



Basic assumptions

- The needed knowledge and wisdom exists and is accessible
- Insights are discovered when a system connects to itself in creative ways
- Shared insights are created by:
 1. Giving respect to unique contributions
 2. Connecting ideas
 3. Listening in order to identify the common, the new and the deep



World Café Guidelines



General Framework

- 3 rounds of discussions in small groups around tables:
 - a. Each round discusses a unique question
 - b. Each round is 20- 30 minutes
- At end of each round the group splits up and each person joins a different table. The “host” stays at the table
- After 3 rounds we will “harvest” the main insights together in the large group



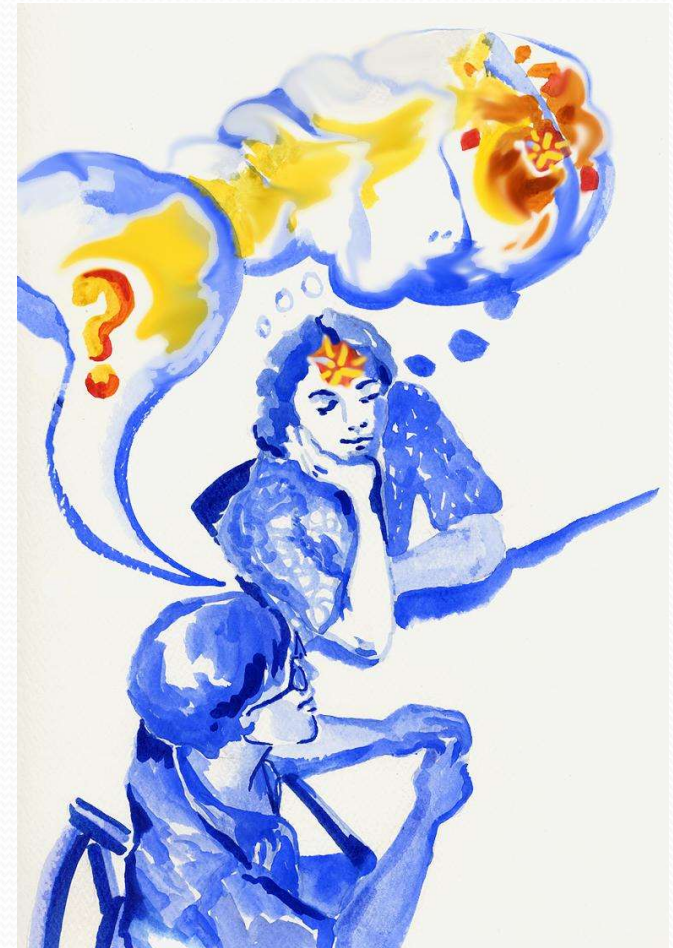
Highly recommended!

- Talk
- Write
- Draw
- Scribble
- Play



The role of the host

- Welcome the “guests”
- Share the main insights of the previous round.
- Present the main insights of the table in the large group



Round one:

- **The JCC as a central social hub in the community resilience:**

What should be the roles of the JCC in strengthening community resilience capacities (the “web”)?



Round 2:

- **Building the JCC as a community social hub:**

What needs to be done in order to strengthen the JCC's ability to fulfil these roles? (strategies and actions, internal and external)



Round 3:

- **JCC's across Europe as a resilience network:**

How can we be a Pan-European resilience network – supporting each other in routine and in times of crisis – how could it work?

